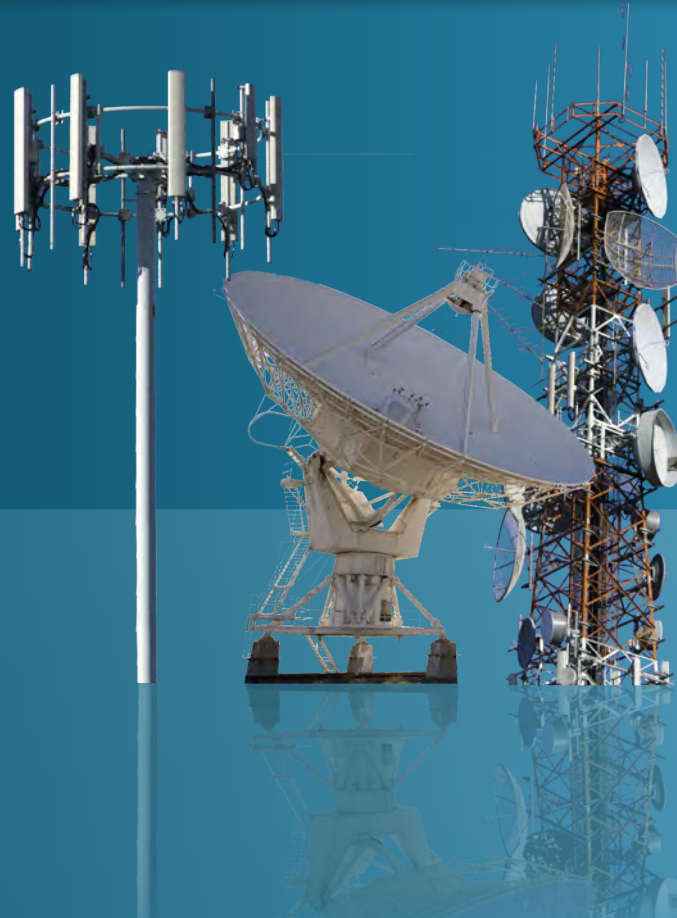


Telecommunication Batteries

Front Terminal Batteries, Top Terminal Batteries

Specifically designed
and engineered
for demanding
telecom applications



Key features

- 10 year float life at 25°C (77°F) – 15 year float life at 20°C (68°F)
- Patented positive grid alloy
- Optimized AGM materials significantly enhance performance and reliability
- State of the art manufacturing automation ensures consistency and reliability
- Advanced 3 stage terminal design to ensure leak free operation
 - Female M8 brass terminals provide maximum performance
- Thermally sealed plastic casing and cover
 - Flame retardant (UL 94 VO) and LOI of at least 28%
 - Designed to withstand extreme degrees of temperature and performance without degradation
- Integral handles and front access terminals ensure ease of installation and maintenance
- All NorthStar telecom batteries are compliant with:
 - Telcordia SR4228, Bellcore GR-63-Core, Issue 1
 - British, German, Russian, African and Brazilian telecom standards
 - UL approved
- Approved as non-hazardous cargo for ground, sea, and air transport
 - DOT 49CFR173.159(d), (i) and (ii)
- NorthStar is registered to ISO 9001 & ISO 14001 standards



Telecom Front Terminal Battery Data



NSB Battery	NSB40FT	NSB60FT	NSB90FT	NSB100FT
Height	209 mm / 8.21 in	263 mm / 10.35 in	255 mm / 10.04 in	287 mm / 11.30 in
Width	97 mm / 3.81 in	108 mm / 4.24 in	108 mm / 4.24 in	108 mm / 4.24 in
Length	250 mm / 9.84 in	287 mm / 11.30 in	396 mm / 15.59 in	396 mm / 15.59 in
Weight	15.3 kg / 27.9 lbs	22.2 kg / 42.6 lbs	31.1 kg / 70.6 lbs	35.5 kg / 78.5 lbs
Terminal Torque	8.0 Nm / 71 in-lbs	8.0 Nm / 71 in-lbs	8.0 Nm / 71 in-lbs	8.0 Nm / 71 in-lbs
8 hour capacity to 1.75 VPC (77°F)	38.1 Ah	57.9 Ah	87.8 Ah	100.5 Ah
10 hour capacity to 1.80 VPC (77°F)	38.1 Ah	57.7 Ah	89.0 Ah	101.4 Ah
Float Voltage (68°F/77°F)	2.29 / 2.27 VPC	2.29 / 2.27 VPC	2.29 / 2.27 VPC	2.29 / 2.27 VPC
Cyclic Recharge	2.35 - 2.45 Volts/Cell	2.35 - 2.45 Volts/Cell	2.35 - 2.45 Volts/Cell	2.35 - 2.45 Volts/Cell
*Impedance (1KHz)	5.6 mΩ	4.3 mΩ	3.6 mΩ	3.4 mΩ
*Conductance	789 S	1063 S	1447 S	1452 S
Short Circuit Current	1500A	2000A	3000A	3500A
Nominal Voltage	12 V	12 V	12 V	12 V



NSB Battery	NSB110FT	NSB130FT	NSB155FT	NSB170FT
Height	227 mm / 8.94 in	253 mm / 9.95 in	280 mm / 11.14 in	320 mm / 12.60 in
Width	125 mm / 4.92 in	158 mm / 6.3 in	125 mm / 4.92 in	125 mm / 4.92 in
Length	560 mm / 22.05 in	427 mm / 16.82 in	560 mm / 22.05 in	560 mm / 22.05 in
Weight	40.5 kg / 91.3 lbs	43.6 kg / 118.0 lbs	51.0 kg / 131.2 lbs	59.1 kg / 131.2 lbs
Terminal Torque	8.0 Nm / 71 in-lbs	8.0 Nm / 71 in-lbs	8.0 Nm / 71 in-lbs	8.0 Nm / 71 in-lbs
8 hour capacity to 1.75 VPC (77°F)	109.9 Ah	126.0 Ah	148.7 Ah	170.8 Ah
10 hour capacity to 1.80 VPC (77°F)	111.5 Ah	127.4 Ah	150.0 Ah	172.4 Ah
Float Voltage (68°F/77°F)	2.29 / 2.27 VPC	2.29 / 2.27 VPC	2.29 / 2.27 VPC	2.29 / 2.27 VPC
Cyclic Recharge	2.35 - 2.45 Volts/Cell	2.35 - 2.45 Volts/Cell	2.35 - 2.45 Volts/Cell	2.35 - 2.45 Volts/Cell
*Impedance (1KHz)	3.2 mΩ	3.0 mΩ	2.9 mΩ	2.7 mΩ
*Conductance	1755 S	1997 S	1893 S	2113 S
Short Circuit Current	4000A	6500A	5000A	5000A
Nominal Voltage	12 V	12 V	12 V	12 V

NorthStar Battery Data

Telecom Top Terminal Battery Data



NSB Battery	NSB13	NSB40	NSB70
Height	129 mm / 5.11 in	176 mm / 6.93 in	176 mm / 6.93 in
Width	83 mm / 3.28 in	165 mm / 6.50 in	165 mm / 6.50 in
Length	175 mm / 6.91 in	197 mm / 7.76 in	331 mm / 13.02 in
Weight	5.2 kg / 11.5 lbs	16.7 kg / 3.3 lbs	26.8 kg / 60.0 lbs
Terminal Torque	6.0 Nm / 53 in-lbs	6.0 Nm / 53 in-lbs	8.0 Nm / 71 in-lbs
8 hour capacity to 1.75 VPC (77°F)	12.2 Ah	39.5 Ah	65.5 Ah
10 hour capacity to 1.80 VPC (77°F)	12.2 Ah	39.8 Ah	64.9 Ah
Float Voltage (68°F/77°F)	2.29 / 2.27 VPC	2.29 / 2.27 VPC	2.29 / 2.27 VPC
Cyclic Recharge	2.35 - 2.45 Volts/Cell	2.35 - 2.45 Volts/Cell	2.35 - 2.45 Volts/Cell
*Impedance (1KHz)	8.9 mΩ	5.0 mΩ	3.8 mΩ
*Conductance	409 S	829 S	1242 S
Short Circuit Current	600A	2000A	3200A
Nominal Voltage	12 V	12 V	12 V



NSB Battery	NSB75	NSB90	NSB125
Height	200 mm / 7.89 in	213 mm / 8.39 in	275 mm / 10.81 in
Width	173 mm / 6.80 in	173 mm / 6.80 in	173 mm / 6.80 in
Length	261 mm / 10.27 in	341 mm / 13.42 in	345 mm / 13.57 in
Weight	27.4 kg / 60.0 lbs	37.0 kg / 83.1 lbs	49.7 kg / 119.0 lbs
Terminal Torque	8.0 Nm / 71 in-lbs	8.0 Nm / 71 in-lbs	8.0 Nm / 71 in-lbs
8 hour capacity to 1.75 VPC (77°F)	69.0 Ah	96.2 Ah	129.2 Ah
10 hour capacity to 1.80 VPC (77°F)	68.9 Ah	95.9 Ah	129.2 Ah
Float Voltage (68°F/77°F)	2.29 / 2.27 VPC	2.29 / 2.27 VPC	2.29 / 2.27 VPC
Cyclic Recharge	2.35 - 2.45 Volts/Cell	2.35 - 2.45 Volts/Cell	2.35 - 2.45 Volts/Cell
*Impedance (1KHz)	3.8 mΩ	3.3 mΩ	3.0 mΩ
*Conductance	1256 S	1552 S	1848 S
Short Circuit Current	3200A	4300A	5000A
Nominal Voltage	12 V	12 V	12 V



Proudly manufactured
in the industry's most
advanced lead-acid battery
manufacturing facility.

All NorthStar Battery products are proudly manufactured in the industry's most advanced facilities, located in the United States in Springfield, Missouri. Utilizing the latest robotic and processing technology, and employing state-of-the-art environmental control systems, NorthStar delivers the best consistency and reliability in the battery industry. Contact your Certified NorthStar Distributor today to see how these products can work for you.



NorthStar Battery Company LLC
4000 Continental Way
Springfield, MO 65803
USA
Tel: (+1) 417 575 8200
Fax: (+1) 417 575 8250
info@northstarbattery.com
www.northstarbattery.com

NorthStar-Europe
Staffans Väg 6-8
Box 7039
SE-192 07 Sollentuna
Sweden
Tel. +46 8 410 102 00
Fax. +46 8 638 06 00
europe@northstarbattery.com

NorthStar-Asia
Building 9, 1201 Gui Qiao Road
Jin Qiao Export Process Zone
201206 Shanghai
China
Tel. +86 21 5899 7610
Fax. +86 21 3872 2201
asia@northstarbattery.com