

SOFTWARE TO CONFIGURE AND MONITOR SELF-CONSUMPTION SYSTEMS

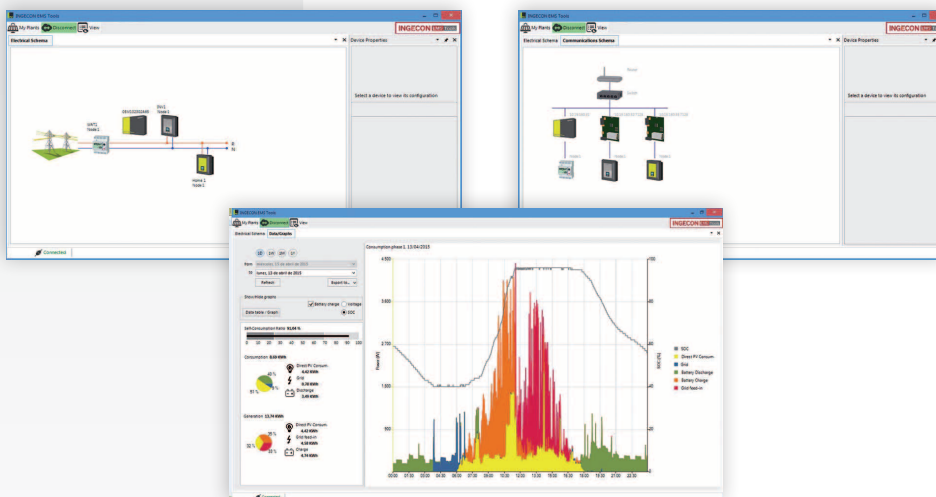
The INGECON® EMS Tools software is the PC application for the monitoring and configuration of self-consumption systems governed by the INGECON® EMS Manager.

This tool seeks to offer users a software close to the Plug & Play philosophy: a very simple, intuitive interface with regard to installation and operation.

This program can be downloaded free of charge from our website: www.ingeteam.com. Compatible with 32 and 64 bit configurations, the software requires the Microsoft .NET Framework 4.0 platform (normally included as part of the operating system) and Windows XP or higher.

Operating modes

- On-line mode: a direct connection is established with the INGECON® EMS Manager device with all functionalities available to the user. Communication with the INGECON® EMS Manager can either be made remotely through the Ingeteam servers or directly by TCP / IP using the device IP address.
- Off-line mode: users can view the parameters configured and the historical data previously downloaded.



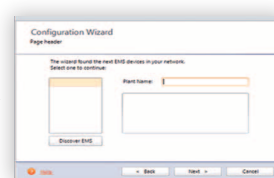
THE SOFTWARE ALLOWS USERS TO

- Configure the INGECON® EMS Manager
- Individually configure each PV plant inverter and other devices.
- Control the loads.
- View the plant wiring diagrams and communications network.
- View the production data.
- Start-up and manage the various PV plants from a PC.
- Data capture, save a file to the disc and get a graphic display of the historical data.

Configuration of the system in 3 simple steps



Step 1
Installation of the software



Step 2
Configuration of the INGECON® EMS Manager



Step 3
Plant configuration and start-up